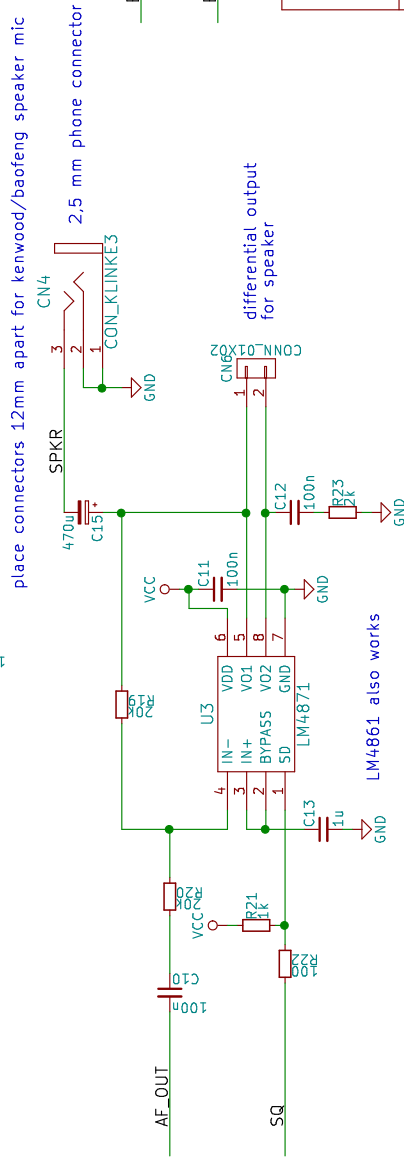
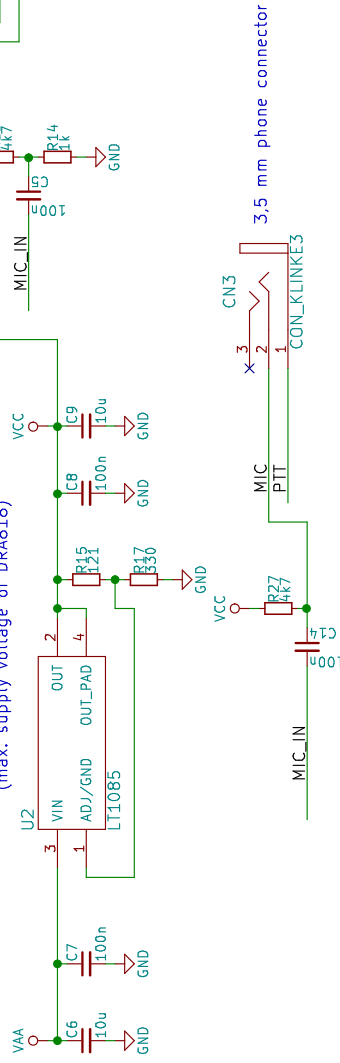


set VCC to 4.5 V
(max. supply voltage of DRA818)



Sheet: /
File: ArduTrxShield.sch

Title: ArduTrx Shield CNC Version

Size: A4 Date: 2018-07-16

KiCad E.D.A. kicad 4.0.2+dfsg1-stable

Rev: x1.1

Id: 1/1